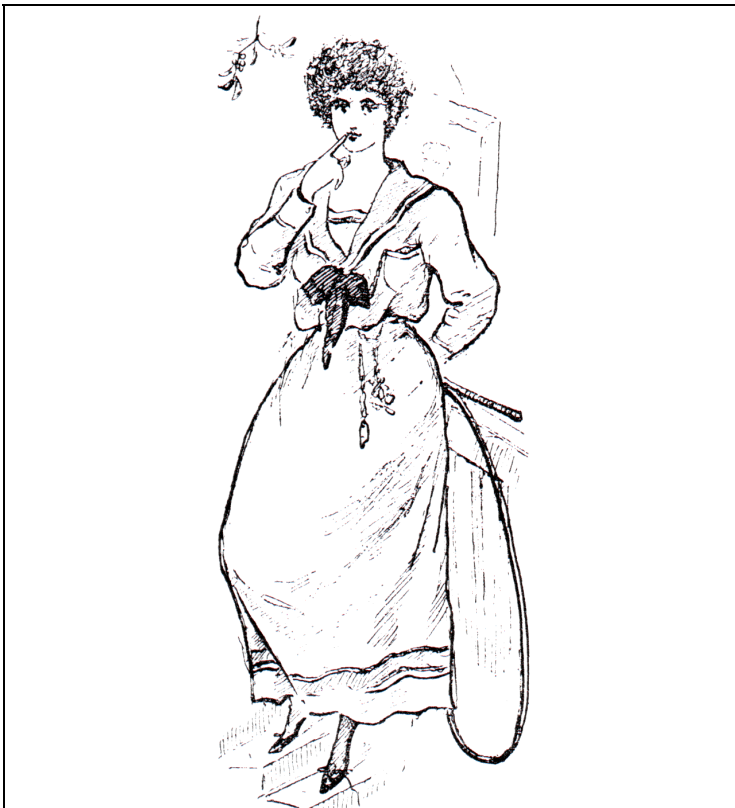
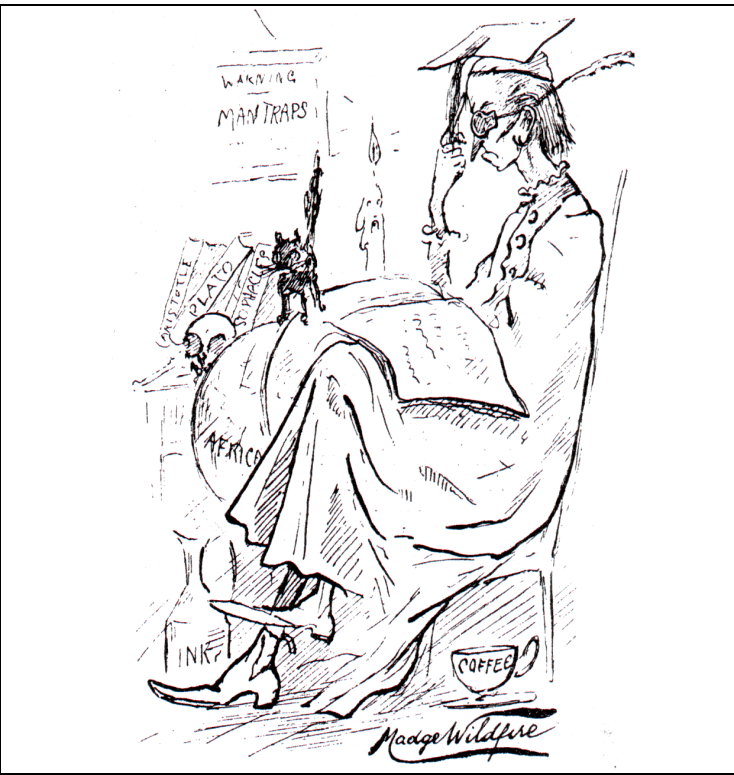


## Timeline of Women's Entrance to Higher Education

United Kingdom	United States
<p><b>1796</b> Anderson's University opens in Glasgow (admits women to classes from the beginning)</p> <p><b>1842</b> Queen's College, Glasgow opens</p>	<p><b>1833</b> Oberlin College opens, first women grads in 1841</p> <p><b>1837</b> Mount Holyoke Seminary opens</p> <p><b>1839</b> Georgia Female College opens</p> <p><b>1847</b> University of Iowa founded, doors open in 1855 (accepts women from Iowa only)</p>
<p><b>1848</b> Foundation of Queen's College, London</p> <p><b>1849</b> Bedford College, London opens</p>	<p><b>1860</b> University of Wisconsin opens a Normal College for teacher training, their Female College will open in 1863</p> <p><b>1865</b> Vassar College opens</p> <p><b>1869</b> Universities of Indiana, Kansas, and Minnesota admit women from their state</p> <p><b>1870</b> Universities of California, Michigan, and Missouri admit women (CA only in-state)</p>
<p><b>1872</b> Girton College founded by Emily Davies</p> <p><b>1873</b> Girton College becomes part of Cambridge, but students cannot earn degrees</p>	<p><b>1875</b> Smith &amp; Wellesley Colleges open</p>
<p><b>1876</b> Diploma for women with title of LL.A., instituted at the University of St. Andrews</p> <p><b>1878</b> Admission to membership and degrees at the University of London</p> <p><b>1879</b> Lady Margaret Hall and Somerville Hall opened at Oxford</p> <p><b>1883</b> Queen Margaret College, Glasgow opens</p> <p><b>1884</b> University Colleges in Wales admit women</p>	<p><b>1878</b> Harvard's female Annex established</p>
<p><b>1889</b> Universities (Scotland) Act passed, women given full admission to all universities in 1892</p>	<p><b>1885</b> Bryn Mawr College opens</p> <p><b>1889</b> Barnard College opens</p>
<p><b>1895</b> Admission to Degrees, in all faculties except Theology, at the University of Durham</p> <p><b>1904</b> Women admitted to Trinity College, Dublin</p> <p><b>1920</b> Oxford grants degrees to a limited number of women</p>	<p><b>1893</b> Harvard Annex becomes Radcliffe College</p>
<p><b>1948</b> Cambridge allows women to receive degrees</p>	<p><b>1924</b> Duke University established (has separate male and female campus until 1972)</p> <p><b>1969</b> Yale and Princeton accept their first female undergraduates</p> <p><b>1970</b> University of Virginia becomes fully coeducational</p>

Illustrations of Female Students in the *Glasgow University Magazine* in 1891



**Attaining or Avoiding: Female education and the question of marriage**  
Paper submitted for the Berkshire Conference on the History of Women  
Seminar on Singlewomen, June 15, 2008  
By Dr. Christine D. Myers  
Independent Scholar